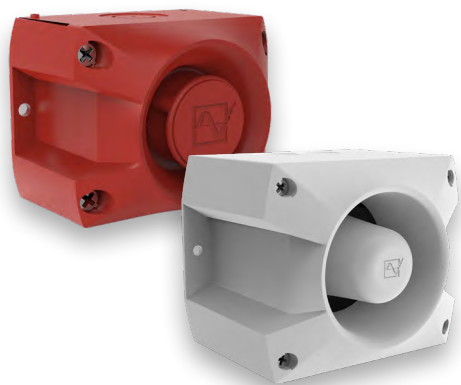


# PATROL SOUNDERS 105/107 dB(A) PA 1 / PA 5



PATROL – the new generation of sounders.  
Three dimensional innovation.

- Safe; an incorrect installation is virtually impossible.
- Easy; significantly shorter assembly and installation times.
- Economical; extremely high efficiency and good penetration of acoustical obstacles significantly reduce the required number of sounders.



reddot design award  
winner 2013

<b>IP 66</b>	<b>IK08</b>	<b>+55 °C</b> <b>-40 °C</b>			<b>EN 54-3</b>	<b>VdS</b>	<b>UL</b>	<b>10 Years</b>	<b>EAC</b>	<b>M12</b>
protection system	impact-proof housing	operating temperature	acoustic penetration	external tone selection	24-48 V DC	24-48 V DC		warranty		connector (option)

PRODUCT	PA 1				PA 5			
<b>DATA</b>								
<b>Operating range</b>	195-253 V	95-127 V	18-30 V	10-57 V	195-253 V	95-127 V	18-30 V	10-57 V
	AC 50   60		AC	DC	AC 50   60		AC	DC
<b>Nominal current consumption <sup>1</sup></b>	9-15 mA	8-30 mA	59-120 mA	6-80 mA	9-15 mA	8-30 mA	59-120 mA	6-80 mA
<b>Sound pressure level</b>	105 dB(A)				107 dB(A)			
<b>Sound pressure level @DIN-tone</b>	104 dB(A)				105 dB(A)			
<b>Sound level reduction</b>	max. -16 dB via potentiometer							
<b>Alarm tones</b>	80 / 4 tones are externally selectable							
<b>Operating temperature</b>	-40 °C ... +55 °C							
<b>Storage temperature</b>	-40 °C ... +70 °C							
<b>Relative humidity</b>	90 %							
<b>Protection system according to EN 6052</b>	IP 66							
<b>Protection class</b>	II							
<b>Duty cycle</b>	100 %							
<b>Material</b>	PC / ABS blend similar to RAL 3000 (flame red)   RAL 7035 (light grey)   RAL 9003 (signal white)							
<b>Cable entry</b>	3x M20 M20 knock-outs on side, 1 knock-out on back				5x M20 knock-outs on side, 1 knock-out on back			
<b>Integrated seal with cable entry</b>	6-13 mm (feed-through grommet)							
<b>Connecting terminals</b>	2.5 mm <sup>2</sup> fine wire with cable end sleeve, AWG 16							
<b>Weight</b>	405 g		270 g		778 g		643 g	

<sup>1</sup> Power consumption dependent on operating voltage.

## OPTIONS/ACCESSORIES

				<b>Enclosure fitting</b>	<b>Surface gasket</b>	<b>Tamper-proof sealing</b>	<b>Panel mounting kit</b>
--	--	--	--	--------------------------	-----------------------	-----------------------------	---------------------------