

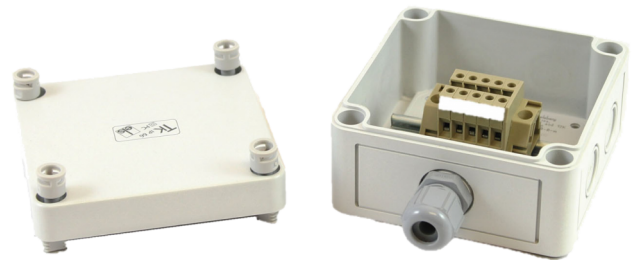
# ACA-JBW

## LHD Cable Accessory - Junction Box, IP65/66 w/ Cable Glands & Terminals

### General

---

The ACA-JBW junction box is designed to join and protect linear heat sensor cable against damage when cable joints are required. The ACA-JBW is weatherproof and is supplied with cable glands and terminals to facilitate connection of cables even in harsh environments.



### Details

---

- Easy connections of linear heat cable
- High IP rating for outdoor applications
- Supplied with connection terminals and glands

# ACA-JBW

## LHD Cable Accessory - Junction Box, IP65/66 w/ Cable Glands & Terminals

### Technical specifications

---

#### Physical

Physical dimensions	94 x 94 x 57 mm (3.7 x 3.7 x 2.2")
Net weight	240 g 0.5 lbs
Material (body)	Polycarbonate

#### Environmental

Environment	Indoor, Outdoor
IP rating	IP65/66

#### Dimensions (h x w x d)

	94 x 94 x 57 mm (3.7 x 3.7 x 2.2")
--	------------------------------------

#### Weight

	240g (0.5lbs)
--	---------------

#### Material

	Polycarbonate
--	---------------

#### IP rating

	IP65/66
--	---------

