

Sigma CP-R & Ancillary PCB

Conventional Fire Alarm Control Panel Repeaters



Sigma CP-R Product Overview

- The Sigma CP-R Repeater is compatible with all Sigma CP control panels which have operating software version V2.0 or above.
- Repeaters are available with 2, 4 or 8 zones and in mains powered (K versions) or 24V powered (E versions).
- Mains powered repeaters require only a two core data cable from the main control panel. 24V DC versions require an additional two cores for power either from the main panel or from another 24V DC source.
- A mixture of Repeaters, Ancillary boards or Sounder Boards up to a maximum of 7 of each type can be connected to a control panel and each is allocated an address from 1 to 7 using a binary coded DIL switch. The total length of the data cable from the main panel to the last repeater must not exceed 1200 metres.

Ancillary PCB Product Overview

- The Sigma Ancillary Board is compatible with all Sigma CP and CP-R panels which have operating software version V2.0 or above.
- The board provides common fire, common fault, coincidence and zonal fire, volt free contacts allowing control of sub-systems, graphical mimics and plant, remotely from the main panel over a two wire data bus.
- Mains powered Ancillary boards require only a two core data cable from the main control panel. 24V DC versions require an additional two cores for power either from the main panel or from another 24V DC source.
- A mixture of Ancillary boards, Sounder boards or Repeaters up to a maximum of 7 of each type can be connected to a control panel and each is allocated an address from 1 to 7 using a binary coded DIL switch. The total length of the data cable from the main panel to the last repeater must not exceed 1200 metres.

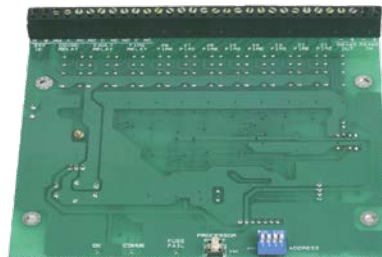
Sigma CP-R Features

- Two wire serial connection
- Up to 7 panels per system
- 230V AC or 24V DC powered versions
- Full control over main panel
- Volt free fire and fault contact outputs

Ancillary PCB Features

- Two wire serial connection
- Up to 7 boards per system
- 230V AC or 24V DC powered versions
- Open collector zonal fault outputs
- Volt free fire, coincidence and common fault contact outputs

Note: Also available is the Sigma Sounder Board (K461) which is compatible with all Sigma CP and CP-R panels which have operating software version V3.0 or above. See DS48 for more details.



Part No. K580

Panels

Product Code	Description	Supply Voltage	Standby Current	Alarm Current	Size (mm)
E01020L2	2 zone Sigma CP-R repeater panel	24V DC	0.075 Amps	0.094 Amps	385 x 310 x 60
E01040L2	4 zone Sigma CP-R repeater panel	24V DC	0.075 Amps	0.098 Amps	385 x 310 x 60
E01080L2	8 zone Sigma CP-R repeater panel	24V DC	0.075 Amps	0.11 Amps	385 x 310 x 60
K01020M2	2 zone Sigma CP-R repeater panel with PSU	230V AC	0.075 Amps	0.094 Amps	385 x 310 x 90
K01040M2	4 zone Sigma CP-R repeater panel with PSU	230V AC	0.075 Amps	0.098 Amps	385 x 310 x 90
K01080M2	8 zone Sigma CP-R repeater panel with PSU	230V AC	0.075 Amps	0.11 Amps	385 x 310 x 90
K580	Stand alone ancillary board	24V DC	0.020 Amps	0.2 Amps	155 x 136
K02000M2	Boxed ancillary board	24V DC	0.020 Amps	0.2 Amps	385 x 310 x 90
K02750M2	Boxed ancillary board with 0.75A PSU	230V AC	0.020 Amps	0.2 Amps	385 x 310 x 90
K18002	Tamper resistant Vision Window *	N/A	N/A	N/A	

* Vision Window can be easily retrofitted to any Sigma CP-R panel

Sigma CP-R Technical

Construction	- 1.2mm mild sheet steel
IP Rating	- IP30
Finish	- Epoxy powder coated
Colour - lid & box	- BS 00 A 05 grey - fine texture
Colour - Controls plate & labels	- RAL 7047 light grey - satin
Weight	- 6kg
Supply voltage (K models)	- 230V AC (+10%/-15%)
Supply voltage (E models)	- 20-30V DC
Mains supply fuse	- 1.6A 250V
Power supply DC rating	- 24V 1 Amps
Maximum battery size	- 7Ah 12V (2 per panel)
Fault contact rating	- 30V DC 1 Amp
Fire contact rating	- 30V DC 1 Amp
Cable capacity	- 2.5mm ² per terminal
Operating temperature	- -5°C to +40°C
Operating humidity	- <95% (non condensing)

Ancillary PCB Technical

Construction (boxed)	- 1.2mm mild steel
IP Rating (boxed)	- IP30
Finish	- Epoxy powder coated
Colour - lid & box	- BS 00 A 05 grey - fine texture
Colour - controls plate & labels	- RAL 7047 light grey - satin
Weight	- 1kg
Supply voltage (K02750M2)	- 230V AC (+10%/-15%)
Supply voltage (K02000M2)	- 20-30V DC
Mains supply fuse	- 1.6A 250V
Power supply DC rating	- 24V 750mA
Maximum battery size	- 2.6Ah 12V (2 per panel)
Standby current	- 20mA
Full alarm current	- 190mA
Fault contact rating	- 30V DC 1 Amp
Fire contact rating	- 30V DC 1 Amp
Coincidence contact rating	- 30V DC 1 Amp
Zonal contact rating	- 30V DC 1 Amp
Cable capacity	- 2.5mm ² per terminal
Operating temperature	- -5°C to +50°C
Operating humidity	- <95% (non condensing)

